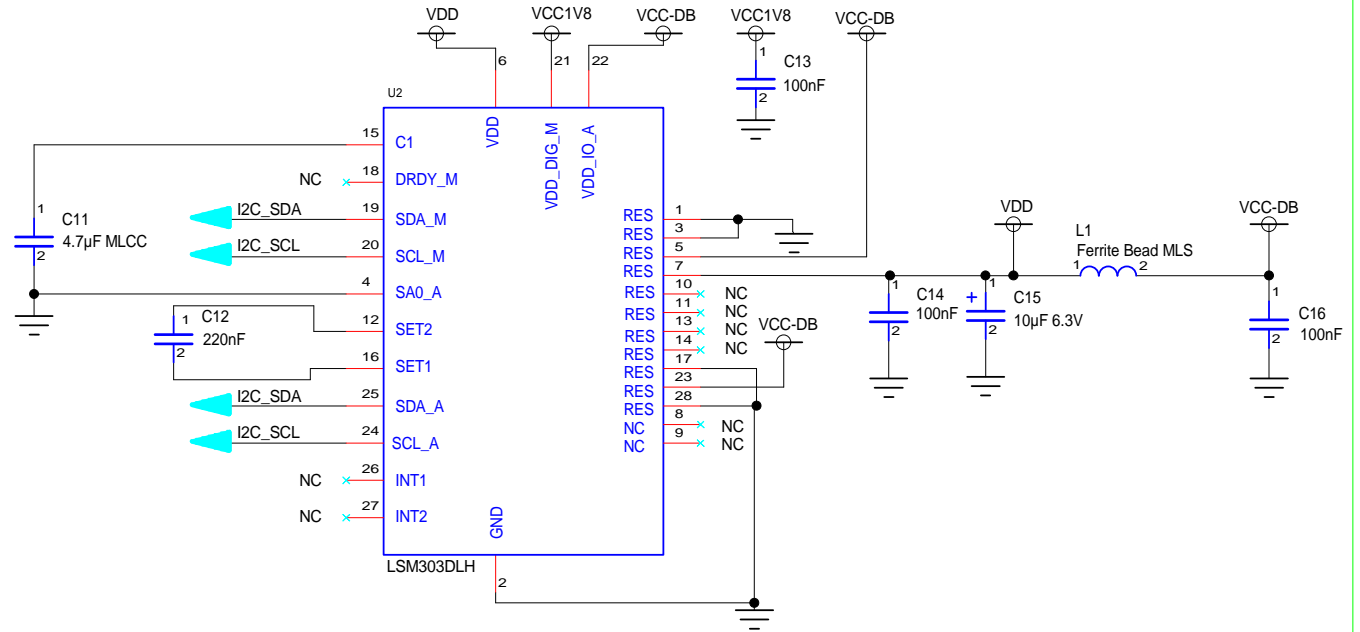


Caution :
 - NO GROUND PLANE and NO NET below the component (TOP AND BOTTOM).
 - LEAVE A COUPLE millimeters space between the nickel bearing components and the LM303DLH when using surface-mount electronic components containing the ferrous metal nickel.

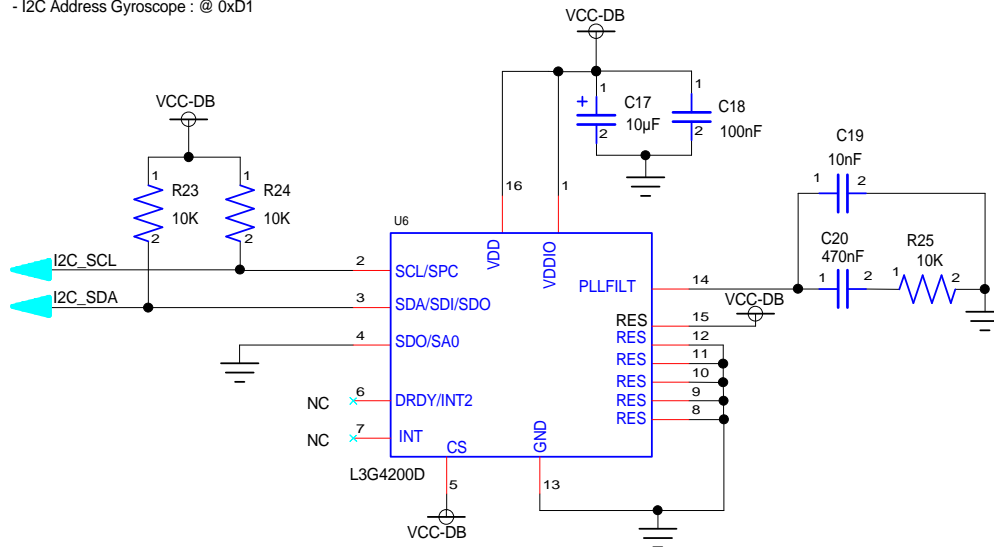
I2C Address Accelerometer :
 @0x31

I2C Address Magnetometer :
 @0x3D



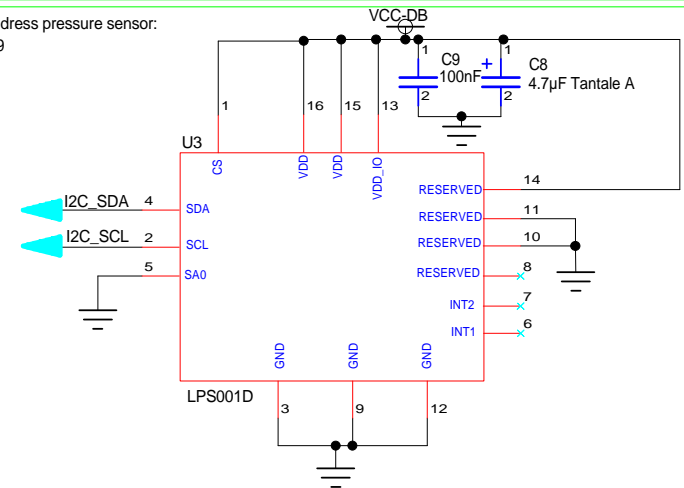
Magnetmeter and Accelerometer

NB :
 - CS high to use i2c interface
 - I2C Address Gyroscope : @0xD1



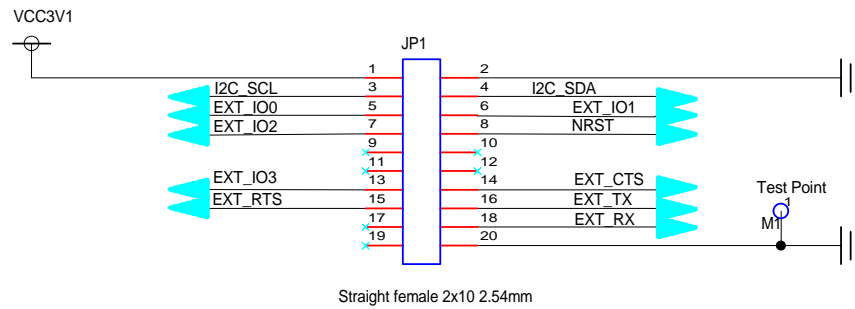
Gyroscope

I2C Address pressure sensor :
 @0xB9



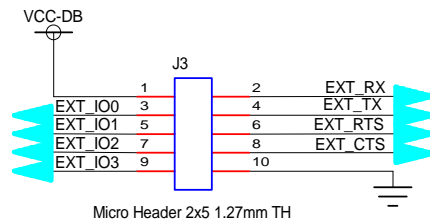
Mems Pressure Sensor : 300 - 1100 mbar absolute digital

CONTRACT NO.		COMPANY NAME RAISONANCE SAS			
APPROVALS	DATE	DWG Extension Board Open4 * Inertial Moving System *			
DRAWN SB	May 2011	SIZE A	FSCM NO. OP4-InertialExt	DWG NO. Sensors	REV. V1.1
CHECKED YRT	May 2011	SCALE		SHEET 1 of 5	
ISSUED					



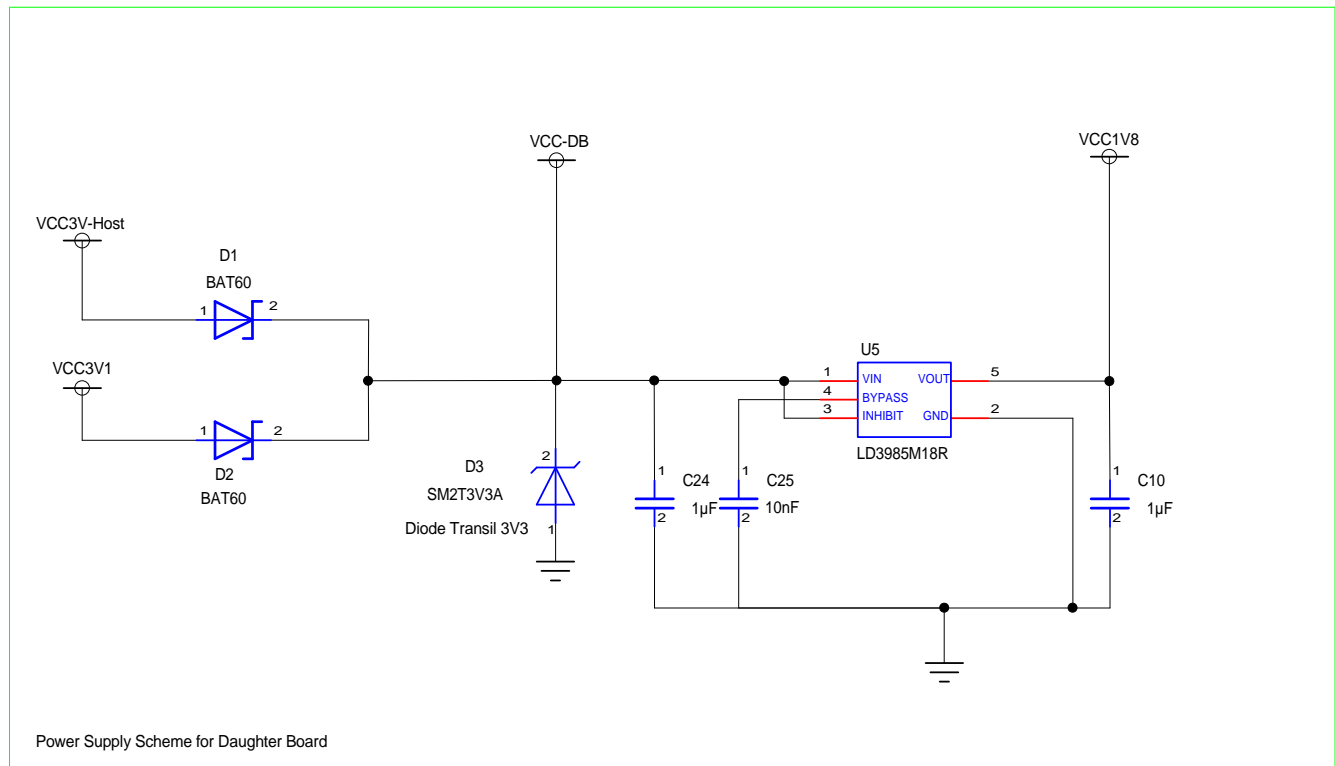
Primer Connector 20 PTS

N°	CT Name	SIG Name
1	V2V8	VCC3V1
2	GND	GND
3	SCL	SCL
4	SDA	SDA
5	MISO	EXT_IO0
6	SD	EXT_IO1
7	SCK	EXT_IO2
8	WS	NRST
9	CANH	NC
10	CANL	NC
11	ADC1	NC
12	ADC2	NC
13	A_TIM	EXT_IO3
14	CTS	EXT_CTS
15	RTS	EXT_RTS
16	TX	EXT_TX
17	CK	NC
18	RX	EXT_RX
19	VBAT	VBAT
20	GND	GND



Extension Connector 10 PTS

CONTRACT NO.		COMPANY NAME RAISONANCE SAS			
APPROVALS	DATE	DWG Extension Board Open4 * Inertial Moving System *			
DRAWN SB	May 2011	SIZE	FSCM NO.	DWG NO.	REV.
CHECKED YRT	May 2011	A	OP4-InertialExt	Extens. connector	V1.1
ISSUED		SCALE		SHEET	2 of 5



CONTRACT NO.		COMPANY NAME RAISONANCE SAS			
APPROVALS	DATE	DWG Extension Board Open4 * Inertial Moving System *			
DRAWN	SB	May 2011	SIZE	FSCM NO.	REV. V1.1
CHECKED	YRT	May 2011	A	OP4-InertialExt	DWG NO. Power supply
ISSUED			SCALE		SHEET 3 of 5